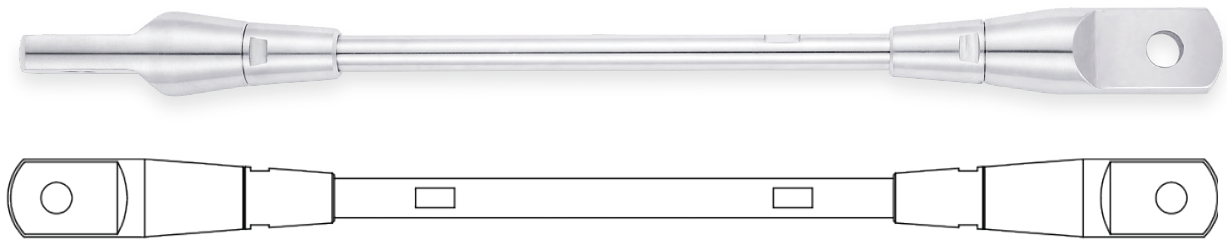


Spade F33 System

The fully machined F33 spade system is an alternative end fitting option for fixing plates where a clevis fitting is unsuitable. The Sta-Lok spade system is designed to meet modern constructional tolerances and projects with small adjustment requirements. System lengths up to 6 meters are available, rod connectors can be used to achieve longer spans.

- All Rods and components are machined from solid stainless steel alloys offering maximum strength and superiority over other manufacturing processes
- Tie rods adjustment is achieved by rotating in a clockwise/counter clockwise direction
- Machined Spanner Flats included as standard
- Conical locking nuts cover tie rod threads at mid adjustment, providing a clean line between the rod and end fitting
- Tie rod systems are supplied ready to install. Spade ends are pre-assembled and adjusted to your hole centre requirements
- Available in Satin (standard) or Polished Finish



** shown with conical nut*

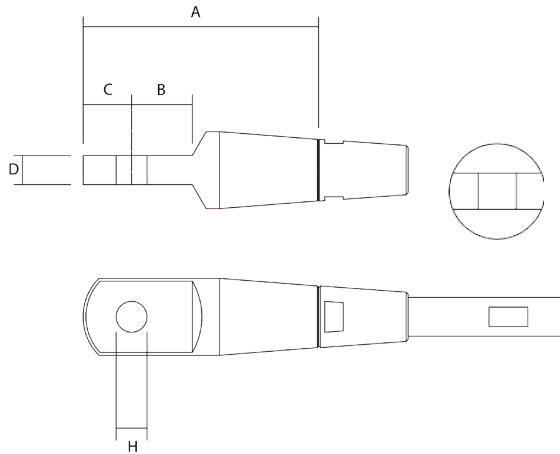
Reference	Thread		Assembly Adjustment +/-		Yield Loads		Break Loads	
	Metric	UNF	MM	Inch	KN	KIPS	KN	KIPS
F33SS-M6	M6		15	0.591	8.9	2.00	12.5	2.81
F33SS-14		1/4	15	0.591	7.5	1.69	14.3	3.21
F33SS-M8	M8		15	0.591	16.4	3.69	23.0	5.17
F33SS-516		5/16	15	0.591	12.1	2.72	22.9	5.15
F33SS-M10	M10		15	0.591	26.1	5.87	36.6	8.23
F33SS-38		3/8	15	0.591	18.6	4.18	35.3	7.94
F33SS-M12	M12		15	0.591	38.1	8.57	53.4	12.00
F33SS-12		1/2	15	0.591	34.1	7.67	64.8	14.57
F33SS-M16	M16		15	0.591	72.1	16.21	100.9	22.68
F33SS-58		5/8	15	0.591	54.9	12.34	104.3	23.45
F33SS-M20	M20		15	0.591	103.6	23.29	144.0	32.37
F33SS-34		3/4	20	0.787	80.4	18.07	137.8	30.98
F33SS-M22	M22		20	0.787	129.5	29.11	180.1	40.49
F33SS-78		7/8	20	0.787	109.9	24.71	188.4	42.35
F33SS-M24	M24		20	0.787	149.2	33.54	207.5	46.65
F33SS-100		1	20	0.787	142.9	32.13	245.0	55.08
F33SS-M27	M27		20	0.787	196.4	44.15	273.3	61.44
F33SS-118		1 1/8	20	0.787	243.8	54.81	339.3	76.28
F33SS-M30	M30		25	0.984	238.7	53.66	332.1	74.66
F33SS-114		1 1/4	25	0.984	307.1	69.04	427.3	96.06
F33SS-M36	M36		25	0.984	349.2	78.50	485.8	109.21

Spade F33

Dimensions

Our fully machined spade end. Designed for use where a short range of adjustment is required.

- Available with left and right hand Metric or UNF machined internal threads
- Available in Satin (standard) or Polished Finish
- Supplied with conical nut as standard. Alternative locking nut options are available (page 33)
- Isolation between different materials can be achieved using isolation washers and sleeves (refer to page 29 & 32)



** shown with conical nut*

Reference		Thread		A		B		C		D		H	
Left Hand	Right Hand	Metric	UNF	MM	Inch	MM	Inch	MM	Inch	MM	Inch	MM	Inch
F33-M6L	F33-M6R	M6		52.0	2.047	10.0	0.394	9.0	0.354	6.0	0.236	6.3	0.250
F33-14L	F33-14R		1/4	52.0	2.047	10.0	0.394	9.0	0.354	6.0	0.236	6.3	0.250
F33-M8L	F33-M8R	M8		57.0	2.244	14.0	0.551	11.0	0.433	8.0	0.315	8.0	0.315
F33-516L	F33-516R		5/16	57.0	2.244	14.0	0.551	11.0	0.433	8.0	0.315	8.0	0.315
F33-M10L	F33-M10R	M10		74.0	2.913	20.0	0.787	16.0	0.630	11.0	0.433	11.0	0.433
F33-38L	F33-38R		3/8	74.0	2.913	20.0	0.787	16.0	0.630	11.0	0.433	11.0	0.433
F33-M12L	F33-M12R	M12		97.0	3.819	25.0	0.984	20.0	0.787	12.0	0.472	12.7	0.500
F33-12L	F33-12R		1/2	97.0	3.819	25.0	0.984	20.0	0.787	12.0	0.472	12.7	0.500
F33-M16L	F33-M16R	M16		104.0	4.094	30.0	1.181	26.0	1.024	16.0	0.630	16.0	0.630
F33-58L	F33-58R		5/8	104.0	4.094	30.0	1.181	26.0	1.024	16.0	0.630	16.0	0.630
F33-M20L	F33-M20R	M20		136.0	5.354	40.0	1.575	30.0	1.181	19.0	0.748	19.0	0.748
F33-34L	F33-34R		3/4	136.0	5.354	40.0	1.575	30.0	1.181	19.0	0.748	19.0	0.748
F33-M22L	F33-M22R	M22		152.0	5.984	45.0	1.772	30.0	1.181	22.0	0.866	22.0	0.866
F33-78L	F33-78R		7/8	152.0	5.984	45.0	1.772	30.0	1.181	22.0	0.866	22.0	0.866
F33-M24L	F33-M24R	M24		174.0	6.850	50.0	1.969	40.0	1.575	25.0	0.984	25.4	1.000
F33100L	F33-100R		1	174.0	6.850	50.0	1.969	40.0	1.575	25.0	0.984	25.4	1.000
F33-M27L	F33-M27R	M27		181.0	7.126	50.0	1.969	41.0	1.614	28.0	1.102	29.0	1.142
F33-118L	F33-118R		1 1/8	181.0	7.126	50.0	1.969	41.0	1.614	28.0	1.102	29.0	1.142
F33-M30L	F33-M30R	M30		210.0	8.268	55.0	2.165	51.0	2.008	30.0	1.181	30.5	1.201
F33-114L	F33-114R		1 1/4	210.0	8.268	55.0	2.165	51.0	2.008	31.7	1.250	32.0	1.260
F33-M36L	F33-M36R	M36		246.0	9.685	70.0	2.756	60.0	2.362	35.0	1.339	36.0	1.417