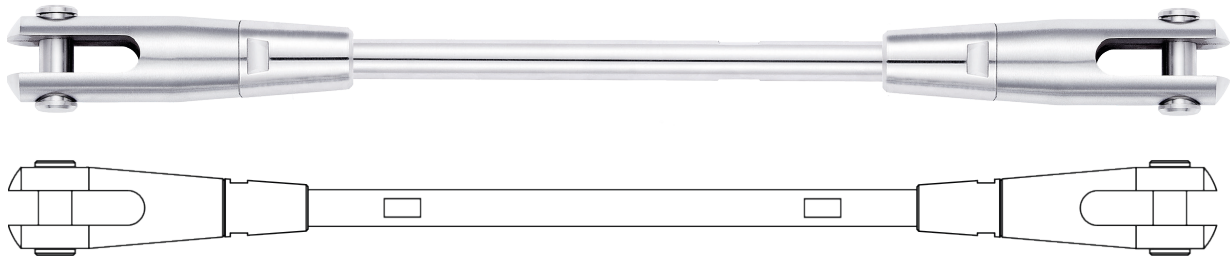


SC Clevis System

The SC Clevis System is designed and developed to meet modern constructional tolerances and projects with small adjustment requirements. The SC Clevis System is our cost effective fully machined fork. System lengths up to 6 meters are available, rod connectors can be used to achieve longer spans.

- All Rods and components are machined from solid stainless steel alloys offering maximum strength and superiority over other manufacturing processes
- Tie rods adjustment is achieved by rotating in a clockwise/counter clockwise direction
- Machined Spanner Flats included as standard
- Conical locking nuts cover tie rod threads at mid adjustment, providing a clean line between the rod and end fitting
- Double headed pins, including pin head and locking screw are supplied as standard
- Tie rod systems are supplied ready to install. Fork ends are pre-assembled and adjusted to your pin/pin requirements
- Available in Satin (standard) or Polished Finish



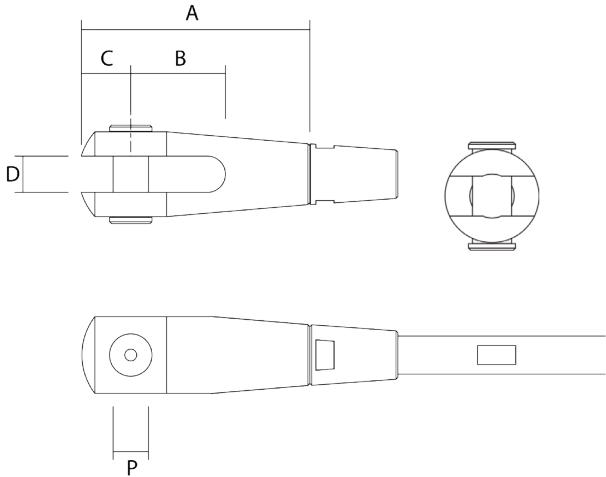
** shown with conical nut*

Reference	Thread		Assembly Adjustment +/-		Yield Loads		Break Loads	
	Metric	UNF	MM	Inch	KN	KIPS	KN	KIPS
SC2S-M6	M6		15	0.591	8.9	2.00	12.5	2.81
SC2S-14		1/4	15	0.591	7.5	1.69	14.3	3.21
SC2S-M8	M8		15	0.591	16.4	3.69	23.0	5.17
SC2S-516		5/16	15	0.591	12.1	2.72	22.9	5.15
SC2S-M10	M10		15	0.591	26.1	5.87	36.6	8.23
SC2S-38		3/8	15	0.591	18.6	4.18	35.3	7.94
SC2S-M12	M12		15	0.591	38.1	8.57	53.4	12.00
SC2S-12		1/2	15	0.591	34.1	7.67	64.8	14.57
SC2S-M16	M16		15	0.591	72.1	16.21	100.9	22.68
SC2S-58		5/8	15	0.591	54.9	12.34	104.3	23.45
SC2S-M20	M20		15	0.591	103.6	23.29	144.0	32.37
SC2S-34		3/4	15	0.591	80.4	18.07	137.8	30.98
SC2S-M22	M22		20	0.787	129.5	29.11	180.1	40.49
SC2S-78		7/8	20	0.787	109.9	24.71	188.4	42.35
SC2S-M24	M24		20	0.787	149.2	33.54	207.5	46.65
SC2S-100		1	20	0.787	142.9	32.13	245.0	55.08
SC2S-M27	M27		20	0.787	196.4	44.15	273.3	61.44
SC2S-118		1 1/8	20	0.787	243.8	54.81	339.3	76.28
SC2S-M30	M30		25	0.984	238.7	53.66	332.1	74.66
SC2S-114		1 1/4	25	0.984	307.1	69.04	427.3	96.06
SC2S-M36	M36		25	0.984	349.2	78.50	485.8	109.21

SC Clevis Dimensions

Our standard machined, cost effective clevis end. Designed for use where a short range of adjustment is required.

- Available with left and right hand Metric or UNF machined internal threads
- Available in Satin (standard) or Polished Finish
- Double headed pins, including pin heads and locking screws are supplied as standard
- Supplied with conical nut as standard. Alternative locking nut options are available (page 33)
- Isolation between different materials can be achieved using isolation washers and sleeves (page 29 & 32)



** shown with conical nut*

Reference		Thread		A		B		C		D		P	
Left Hand	Right Hand	Metric	UNF	MM	Inch	MM	Inch	MM	Inch	MM	Inch	MM	Inch
SC M6L	SC M6R	M6		47.0	1.838	10.0	0.394	8.5	0.335	6.3	0.248	6.2	0.245
SC 14L	SC 14R		1/4	47.0	1.838	10.0	0.394	8.5	0.335	6.3	0.248	6.2	0.245
SC M8L	SC M8R	M8		57.0	2.244	14.7	0.580	10.3	0.406	8.0	0.315	7.8	0.308
SC 516L	SC 516R		5/16	57.0	2.244	14.7	0.580	10.3	0.406	8.0	0.315	7.8	0.308
SC M10L	SC M10R	M10		76.0	2.992	22.0	0.866	16.0	0.630	11.0	0.433	10.9	0.430
SC 38L	SC 38R		3/8	76.0	2.992	22.0	0.866	16.0	0.630	11.0	0.000	10.9	0.430
SC M12L	SC M12R	M12		86.0	3.386	27.0	1.063	19.0	0.748	12.7	0.500	12.4	0.490
SC 12L	SC 12R		1/2	86.0	3.386	27.0	1.063	19.0	0.748	12.7	0.500	12.4	0.490
SC M16L	SC M16R	M16		107.0	4.213	30.0	1.181	23.0	0.906	16.0	0.630	15.6	0.615
SC 58L	SC 58R		5/8	107.0	4.213	30.0	1.181	23.0	0.906	16.0	0.630	15.6	0.615
SC M20L	SC M20R	M20		122.0	4.803	40.0	1.575	26.0	1.024	19.0	0.748	18.5	0.728
SC 34L	SC 34R		3/4	122.0	4.803	40.0	1.575	26.0	1.024	19.0	0.748	18.5	0.728
SC M22L	SC M22R	M22		143.0	5.630	45.0	1.772	32.0	1.260	22.0	0.866	21.5	0.847
SC 78L	SC 78R		7/8	143.0	5.630	45.0	1.772	32.0	1.260	22.0	0.866	21.5	0.847
SC M24L	SC M24R	M24		160.0	6.299	50.0	1.969	35.0	1.378	25.0	0.984	25.0	0.984
SC 100L	SC 100R		1	160.0	6.299	50.0	1.969	35.0	1.378	25.0	0.984	25.0	0.984
SC M27L	SC M27R	M27		170.0	6.693	50.0	1.969	41.0	1.614	28.0	1.102	28.2	1.110
SC 118L	SC 118R		1 1/8	170.0	6.693	50.0	1.969	41.0	1.614	28.0	1.102	28.2	1.110
SC M30L	SC M30R	M30		190.0	7.480	60.0	2.362	44.0	1.732	31.0	1.220	30.0	1.181
SC 114L	SC 114R		1 1/4	190.0	7.480	60.0	2.362	44.4	1.750	31.7	1.250	31.5	1.240
SC M36L	SC M36R	M36		209.0	8.228	60.0	2.362	50.0	1.969	35.0	1.378	35.4	1.394