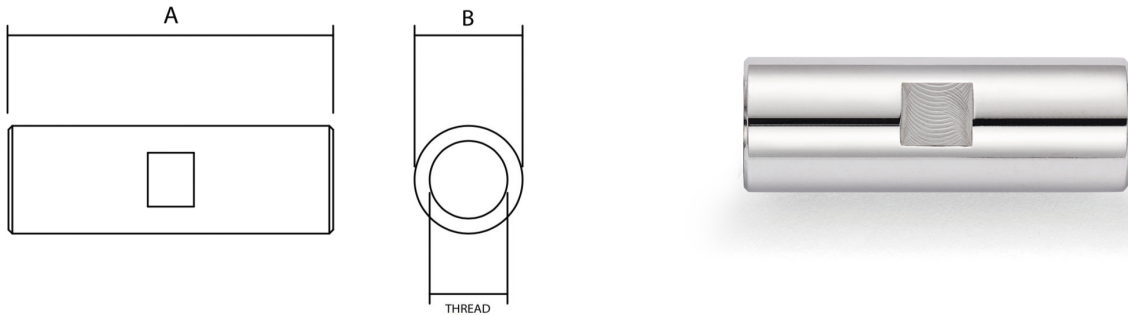


# Rod Connector

Machined stainless steel rod connector, developed to couple multiple rods to provide an increased system span length. Where used, the spanner flat on the rod connector should be used to adjust the rod system.

- Connects Sta-Lok rods for longer spans
- Machined spanner flats included as standard, allow adjustments to be made at any time
- Available with left and right hand Metric or UNF machined internal threads
- Available in Satin (standard) or Polished Finish to match the required rod finish



Reference	Thread		A		B	
	Metric	UNF	MM	Inch	MM	Inch
RC-M6	M6		30.2	1.190	9.5	0.375
RC-14		1/4	30.2	1.190	9.5	0.375
RC-M8	M8		34.9	1.375	11.1	0.437
RC-516		5/16	34.9	1.375	11.1	0.437
RC-M10	M10		41.3	1.625	14.3	0.563
RC-38		3/8	41.3	1.625	14.3	0.563
RC-M12	M12		55.6	2.189	19.1	0.750
RC-12		1/2	55.6	2.189	19.1	0.750
RC-M16	M16		66.7	2.625	22.2	0.875
RC-58		5/8	66.7	2.625	22.2	0.875
RC-M20	M20		79.4	3.125	28.6	1.125
RC-34		3/4	79.4	3.125	28.6	1.125
RC-M22	M22		92.1	3.625	31.8	1.250
RC-78		7/8	92.1	3.625	31.8	1.250
RC-M24	M24		104.7	4.125	34.9	1.375
RC-100		1	104.7	4.125	34.9	1.375
RC-M27	M27		142.9	5.625	41.3	1.625
RC-118		1 1/8	142.9	5.625	41.3	1.625
RC-M30	M30		161.00	6.338	44.4	1.750
RC-114		1 1/4	161.00	6.338	44.4	1.750
RC-M36	M36		182.00	7.165	51.00	2.000