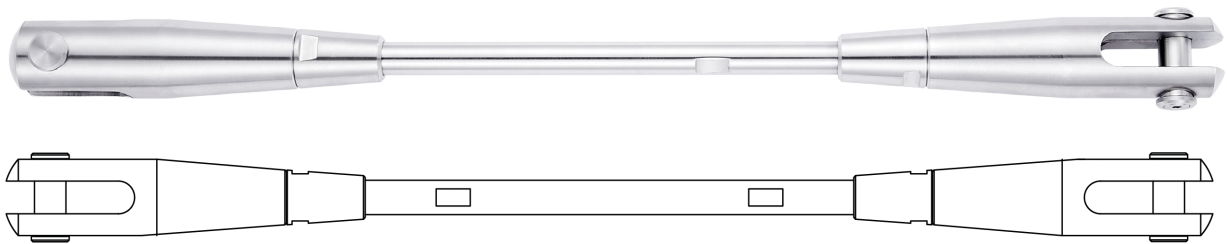


Adjustable Fork F34 System

A sleek fully machined fork clevis system. Developed to meet the requirements of modern architectural design. The Sta-Lok F34 system offers a wide range of adjustment, provided through the clever design of the fork end eliminating the need for turnbuckles. System lengths up to 6 meters are available, rod connectors can be used to achieve longer spans.

- All Rods and components are machined from solid stainless steel alloys offering maximum strength and superiority over other manufacturing processes
- Tie rods adjustment is achieved by rotating in a clockwise/counter clockwise direction
- Machined Spanner Flats included as standard
- Conical locking nuts cover tie rod threads at mid adjustment, providing a clean line between the rod and end fitting
- Double headed pins, including pin head and locking screw are supplied as standard
- Tie rod systems are supplied ready to install. Fork ends are pre-assembled and adjusted to your pin/pin requirements
- Available in Satin (standard) or Polished Finish



** shown with conical nut*

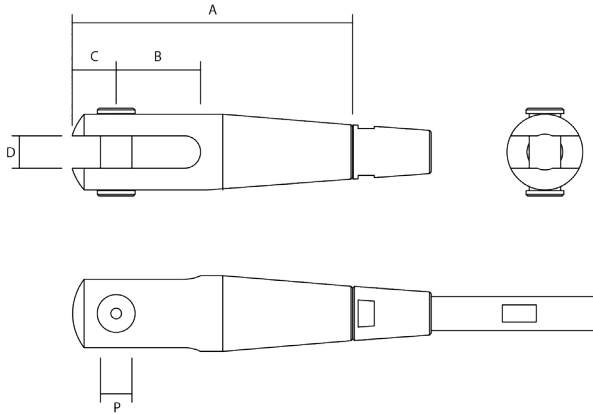
Reference	Thread		Assembly Adjustment +/-		Yield Loads		Break Loads	
	Metric	UNF	MM	Inch	KN	KIPS	KN	KIPS
F34FF-M6	M6		28	1.102	8.9	2.00	12.5	2.81
F34FF-14		1/4	28	1.102	7.5	1.69	14.3	3.21
F34FF-M8	M8		36	1.417	16.4	3.69	23.0	5.17
F34FF-516		5/16	36	1.417	12.1	2.72	22.9	5.15
F34FF-M10	M10		43	1.693	26.1	5.87	36.6	8.23
F34FF-38		3/8	43	1.693	18.6	4.18	35.3	7.94
F34FF-M12	M12		43	1.693	38.1	8.57	53.4	12.00
F34FF-12		1/2	43	1.693	34.1	7.67	64.8	14.57
F34FF-M16	M16		53	2.087	72.1	16.21	100.9	22.68
F34FF-58		5/8	53	2.087	54.9	12.34	104.3	23.45
F34FF-M20	M20		58	2.283	103.6	23.29	144.0	32.37
F34FF-34		3/4	58	2.283	80.4	18.07	137.8	30.98
F34FF-M22	M22		60	2.362	129.5	29.11	180.1	40.49
F34FF-78		7/8	60	2.362	109.9	24.71	188.4	42.35
F34FF-M24	M24		66	2.598	149.2	33.54	207.5	46.65
F34FF-100		1	66	2.598	142.9	32.13	245.0	55.08
F34FF-M27	M27		78	3.071	196.4	44.15	273.3	61.44
F34FF-118		1 1/8	78	3.071	243.8	54.81	339.3	76.28
F34FF-M30	M30		98	3.858	238.7	53.66	332.1	74.66
F34FF-114		1 1/4	98	3.858	307.1	69.04	427.3	96.06
F34FF-M36	M36		98	3.858	349.2	78.50	485.8	109.21

Adjustable Fork F34

Dimensions

A fully machined stainless steel fork clevis with a wide range of adjustment.

- Available with left and right hand Metric or UNF machined internal threads
- Available in Satin (standard) or Polished Finish
- Double headed pins, including pin heads and locking screws are supplied as standard
- Supplied with conical nut as standard. Alternative locking nut options are available (page 33)
- Isolation between different materials can be achieved using isolation washers and sleeves (page 29 & 32)



** shown with conical nut*

Reference		Thread		A		B		C		D		P	
Left Hand	Right Hand	Metric	UNF	MM	Inch	MM	Inch	MM	Inch	MM	Inch	MM	Inch
F34-M6L	F34-M6R	M6		59.0	2.323	10.0	0.394	8.5	0.335	6.3	0.248	6.2	0.245
F34-14L	F34-14R		1/4	59.0	2.323	10.0	0.394	8.5	0.335	6.3	0.248	6.2	0.245
F34-M8L	F34-M8R	M8		78.0	3.071	14.7	0.580	10.3	0.406	8.0	0.315	7.8	0.308
F34-516L	F34-516R		5/16	78.0	3.071	14.7	0.580	10.3	0.406	8.0	0.315	7.8	0.308
F34-M10L	F34-M10R	M10		104.0	4.094	22.0	0.866	16.0	0.630	11.0	0.433	10.9	0.430
F34-38L	F34-38R		3/8	104.0	4.094	22.0	0.866	16.0	0.630	11.0	0.433	10.9	0.430
F34-M12L	F34-M12R	M12		115.0	4.528	27.0	1.063	19.0	0.748	12.7	0.500	12.4	0.490
F34-12L	F34-12R		1/2	115.0	4.528	27.0	1.063	19.0	0.748	12.7	0.500	12.4	0.490
F34-M16L	F34-M16R	M16		140.0	5.512	30.0	1.181	23.0	0.906	16.0	0.630	15.6	0.615
F34-58L	F34-58R		5/8	140.0	5.512	30.0	1.181	23.0	0.906	16.0	0.630	15.6	0.615
F34-M20L	F34-M20R	M20		166.0	6.535	40.0	1.575	26.0	1.024	19.0	0.748	18.5	0.728
F34-34L	F34-34R		3/4	166.0	6.535	40.0	1.575	26.0	1.024	19.0	0.748	18.5	0.728
F34-M22L	F34-M22R	M22		184.0	7.244	45.0	1.772	32.0	1.260	22.0	0.866	21.5	0.847
F34-78L	F34-78R		7/8	184.0	7.244	45.0	1.772	32.0	1.260	22.0	0.866	21.5	0.847
F34-M24L	F34-M24R	M24		207.0	8.150	50.0	1.969	35.0	1.378	25.0	0.984	25.0	0.985
F34-100L	F34-100R		1	207.0	8.150	50.0	1.969	35.0	1.378	25.0	0.984	25.0	0.985
F34-M27L	F34-M27R	M27		228.0	8.976	50.0	1.969	41.0	1.614	28.0	1.102	28.2	1.110
F34-118L	F34-118R		1 1/8	228.0	8.976	50.0	1.969	41.0	1.614	28.0	1.102	28.2	1.110
F34-M30L	F34-M30R	M30		264.0	10.394	60.0	2.362	44.0	1.732	31.0	1.220	30.0	1.181
F34-114L	F34-114R		1 1/4	264.0	10.394	60.0	2.362	44.4	1.750	31.7	1.250	31.5	1.240
F34-M36L	F34-M36R	M36		279.0	10.984	60.0	2.362	50.0	1.969	35.0	1.378	35.4	1.394